

Contact Information:
 Sales@Fleetplanner.be
 Schoordijk 18
 2170 Merksem Belgium
 Fax: +3236453743
 Mobile CEO +32475558839

MAMBO 2 SIRF20

PERSONAL TRACKING SOLUTION

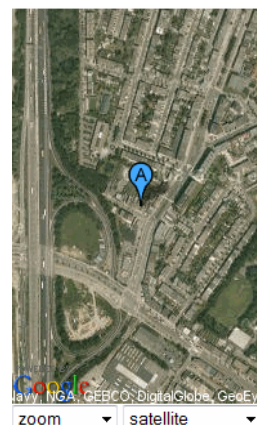
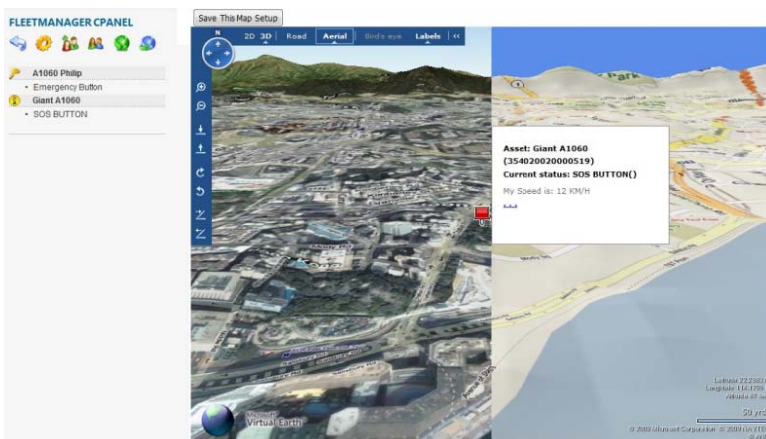
- Proof of Life, Man Down and Motion Functions
- High sensivity 20 channel SiRFStarIII GPS receiver
- Communication via Quad Band GSM
- Voice, SMS, Data, GPRS, TCP/IP
- Full colour OLED display
- Fully approved (FCC1, PTCRB1, CE)
- Remote administration & firmware update
- Online tracking / History / Geofencing
- Fully customizable behaviour
- Autonomous operation
- Personal security and recovery
- Different User-GUIs

Options:

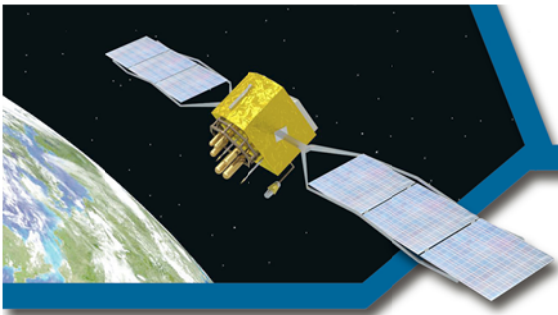
- Rough environment protection
- Bluetooth / IEEE 802.15.4 / ANT* (HEART BEAT MONITOR)
- Micro SD-Card Reader



Keyfob extension
IEEE 802.15.4 option required



Security personnel covering people and objects run a higher risk to get involved in dangerous situations while carrying out their duties. Thorough training stands for active protection in such situations. In order to additionally better the passive protection FALCOM has developed the MAMBO2 with special security functions. In form of a portable GPS-receiver with a telephone function, the MAMBO2 makes it possible that the office of the task force can detect at any time the whereabouts of the security person, may this be outdoors or inside of buildings, the latter by means of special indoor sensors.



Contact Information:
Sales@Fleetplanner.be
Schoordijk 18
2170 Merksem Belgium
Fax: +3236453743
Mobile CEO +32475558839

In case the monitored person should not move away (walk around) for a longer period, a soundless alarm can be initiated – the so called “Dead-Man-Function”. In this case the central office can make contact either by means of call or by message-box and inquire the reason for the delay, or relief action can be started in case of no reaction. On the one hand fixed (pre-set) telephone numbers enable the person concerned to carry out calls, on the other hand however, they reduce considerably the misuse of official telephones for private purposes.

MAMBO2 – the „PLUS“ for passive security.

Intelligent and flexible alarm system, suitable for most applications

- Customizable device messages
- Easy to combine with most digital and analogue sensors
- History
- GeoFencing, distance calculation
- Trip management
- Local and remote communication

Applications

Real time online tracking

- Field employee monitoring
- Security / emergency services
- Trip management
- Distance calculations
- Theft protection
- Displaying of GPS data (speed, height, direction..)
- Point-to-Point navigation
- Heart rate monitoring

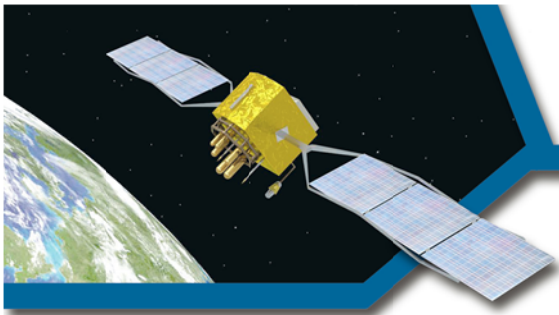
Technical Specifications

GSM CORE

TELIT GE864-Quad module
850/900/1800/1900 MHz
GPRS class 10, class B
TCP/IP

GPS core

FALCOM 20 channel GPS receiver
High sensitivity SiRFStarIII chipset
Protocols: NMEA, WGS-84



Contact Information:
Sales@Fleetplanner.be
Schoordijk 18
2170 Merksem Belgium
Fax: +3236453743
Mobile CEO +32475558839

Position accuracy: < 10 m CEP without SA
TTFF hot start: < 1 s average
TTFF cold start: < 42 s average
Tracking sensitivity: -159 dBm (13 dBHz)

Processor core

ARM7/TDMI
Memory: 8 MB Flash / 4 MB RAM

Electrical characteristics

Power: USB
Li-Polymer battery

Physical characteristics

Dimensions (HxWxT): 86 (103) x 54 x 26 mm
Weight: 108 g
Temperature range
-20 °C to +60 °C

Motion sensor

3-axis motion sensor

Interfaces

Bluetooth* SPP, IEEE 802.15.4*, ANT*

Micro SD card reader*

Mini USB port

OLED display, 128 x 128 Px, Full colour

SIM card reader for 1,8/3 V SIM cards

Internal speaker

Internal microphone

2 Buttons

5-way Joystick

Reset button

* optional available